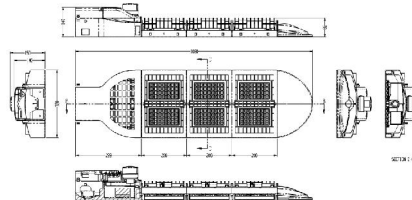


GSSI GROUP

LED GREENLIGHTING

Save Energy . . . Save Money . . . Save the Earth

Model SLB-48 Street Light

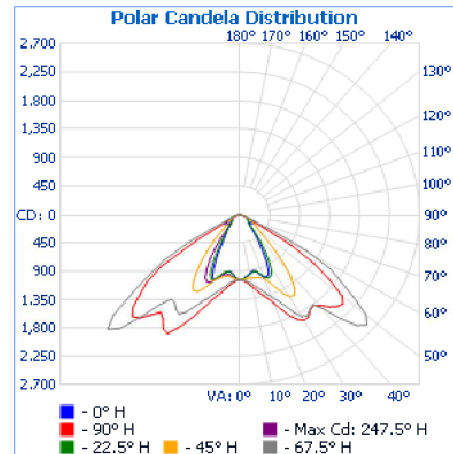


Specifications and Characteristics

Lighting	
Luminaire:	48 LEDs IESNA: LM-63; LM-79; LM-80
Rated Lumens:	4,700
Max Candela:	2698.3 at Horizontal: 247.5°, Vertical 47.5°
Correlated Color Temperature (CCT):	Pure White: 5,000 ~ 7,000 K Warm White: 3,000 ~ 4,000 K
Color Rendering Index (CRI)	Ra > 75
Photometry:	Type C
Warranty:	8 Years, 60,000 hrs.
Electrical	
LED Watts:	48W
Total Watts:	58W
Rated Voltage:	90 - 305V
Input Wattage:	57.9
IP Rating:	65
Certification:	UL, TUV, GS, CE, RoHS
Environmental	
Temperature Range Ambient:	-30°C ~ 50°C
Humidity Range	10% ~ 90% relative humidity
Packing Information	
Dimension:	21.3(l)x12.4(w)x3.5(h)
Net Weight:	15.4 lbs
Pieces per carton:	1

User adjustable 'wedge angle' to increase street side illumination and decrease house side illumination.

Includes an ANSI C136.10 compliant standard receptacle to accept GSSI's model PC-10C or other electronic photocontrols utilizing a 3-prong, locking plug.



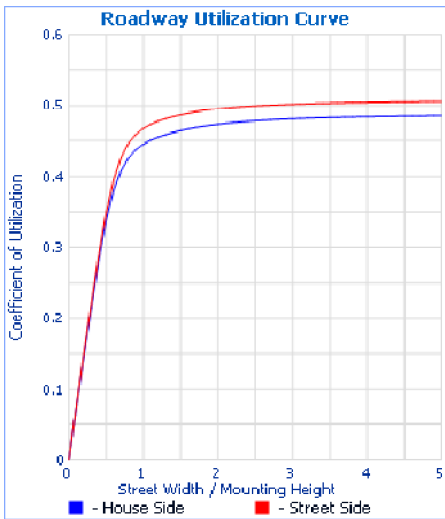
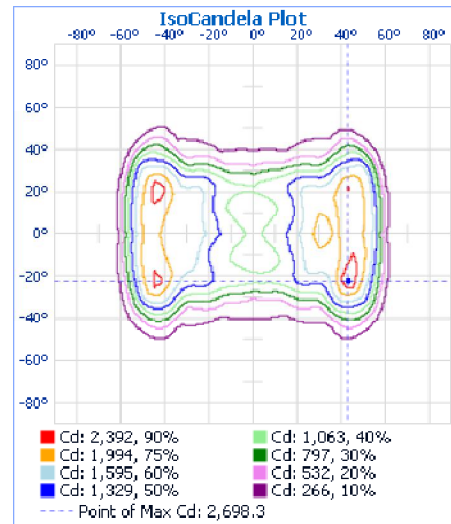
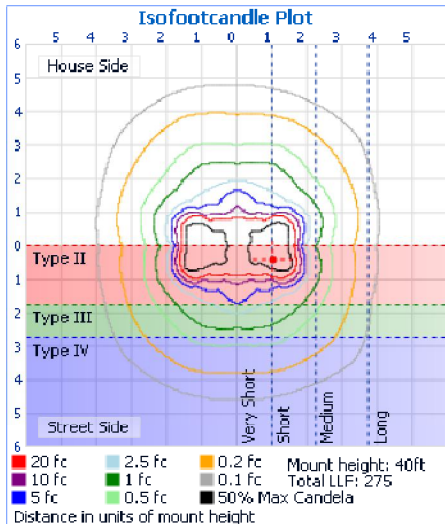
Roadway Summary		
Cutoff Classification:	CUTOFF	
Distribution:	TYPE I, VERY SHORT	
Max CD, 90 Degree Vertical	1.4	
Max CD, 80 to <90 Degree:	66.9	
	Lumens	% Lamp
Downward Street Side:	1,807.5	51.1%
Downward House Side:	1,733.6	49.0%
Downward Total:	3,541.1	100.0%
Upward Street Side:	0.0	0.0%
Upward House Side:	0.0	0.0%
Upward Total:	0.0	0.0%
Total Lumens:	3,541.1	100.0%

GSSI GROUP

LED GREENLIGHTING

Save Energy . . . Save Money . . . Save the Earth

Model SLB-48 Street Light



Illuminance at a Distance

Center Beam FC	Field Width
23.49 fc	15.7ft 23.9ft
5.87 fc	31.5ft 47.7ft
2.61 fc	47.2ft 71.6ft
1.47 fc	63.0ft 95.4ft
0.94 fc	78.7ft 119.3ft
0.65 fc	94.5ft 143.1ft

■ Vert. Spread: 99.5° ■ Horiz. Spread: 121.6°

Illuminance at a Distance

Center Beam FC	Beam Width
23.49 fc	9.1ft 4.1ft
5.87 fc	18.3ft 8.1ft
2.61 fc	27.4ft 12.2ft
1.47 fc	36.6ft 16.3ft
0.94 fc	45.7ft 20.3ft
0.65 fc	54.9ft 24.4ft

■ Vert. Spread: 68.9° ■ Horiz. Spread: 33.9°

Lumens Per Zone					
Zone	Lumens	% Total	Zone	Lumens	% Total
0-10	98.7	2.8%	90-100	0.0	0.0%
10-20	317.7	9.0%	100-110	0.0	0.0%
20-30	618.1	17.5%	110-120	0.0	0.0%
30-40	752.4	21.3%	120-130	0.0	0.0%
40-50	824.5	23.3%	130-140	0.0	0.0%
50-60	651.5	18.4%	140-150	0.0	0.0%
60-70	181.2	5.1%	150-160	0.0	0.0%
70-80	74.3	2.1%	160-170	0.0	0.0%
80-90	22.1	0.6%	170-180	0.0	0.0%

Zonal Lumen Summary			
Zone	Lumens	% Lamp	% Luminaire
0-30	1,034.5	29.2%	29.2%
0-40	1,786.9	50.5%	50.5%
0-60	3,262.9	92.2%	92.2%
0-90	277.6	7.8%	7.8%
0-90	3,540.5	100.0%	100.0%
90-180	0.0	0.0%	0.0%
0-180	3,540.5	100.0%	100.0%

Efficiency
Total: 100.0%