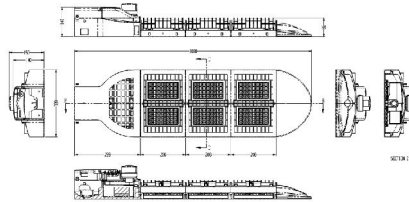


# GSSI GROUP

## LED GREENLIGHTING

Save Energy . . . Save Money . . . Save the Earth

### Model SLB-96 Street Light

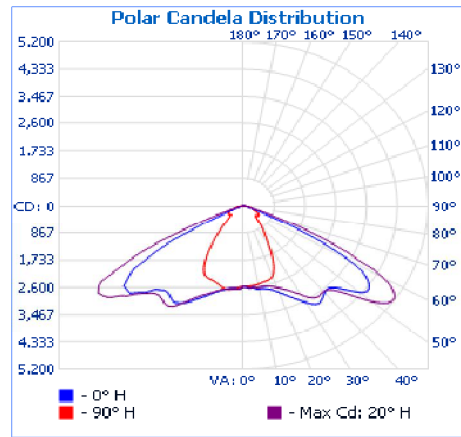


### Specifications and Characteristics

Lighting	
Luminaire:	96 LEDs IESNA: LM-63; LM-79; LM-80
Rated Lumens:	10,150
Max Candela:	5175.3 at Horizontal: 20°, Vertical 55°
Correlated Color Temperature (CCT):	Pure White: 5,000 ~ 7,000 K Warm White: 3,000 ~ 4,000 K
Color Rendering Index (CRI)	Ra > 75
Photometry:	Type C
Warranty:	8 Years, 60,000 hrs.
Electrical	
LED Watts:	96W
Total Watts:	124W
Rated Voltage:	90 - 305V
Input Wattage:	124
IP Rating:	65
Certification:	UL, TUV, GS, CE, RoHS
Environmental	
Temperature Range Ambient:	-30°C ~ 50°C
Humidity Range	10% ~ 90% relative humidity
Packing Information	
Dimension:	28.2(l)x12.4(w)x3.5(h)
Net Weight:	22.1 lbs
Pieces per carton:	1

User adjustable 'wedge angle' to increase street side illumination and decrease house side illumination.

Includes an ANSI C136.10 compliant standard receptacle to accept GSSI's model PC-10C or other electronic photocontrols utilizing a 3-prong, locking plug.



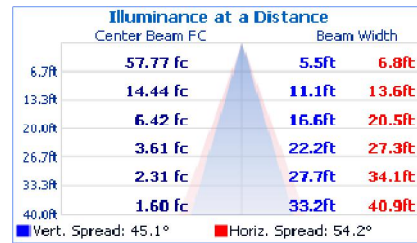
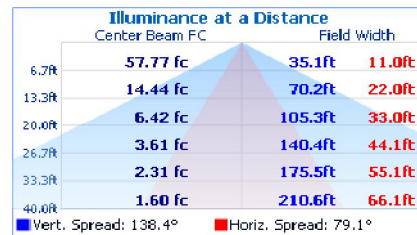
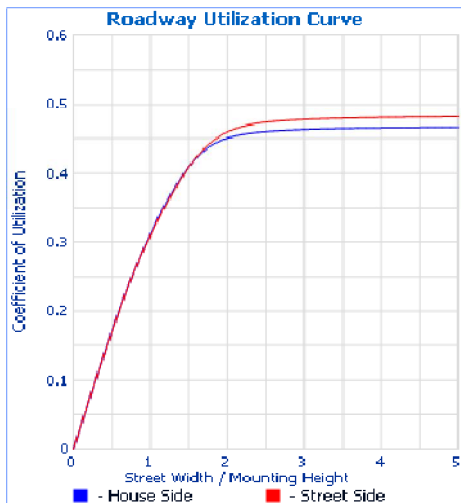
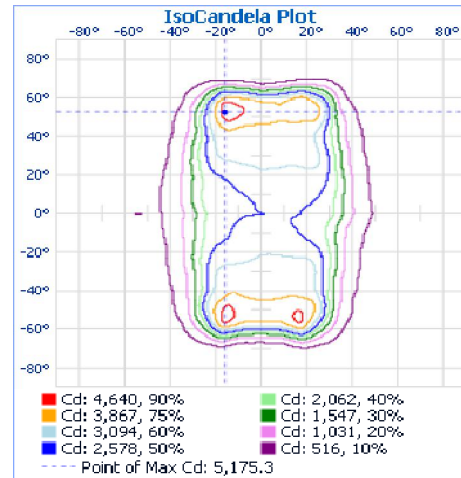
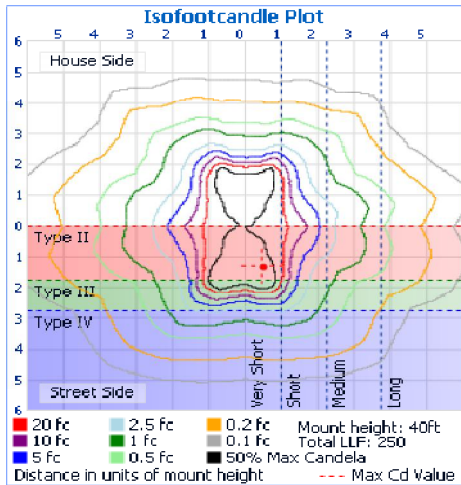
Roadway Summary		
Cutoff Classification:	CUTOFF	
Distribution:	TYPE III, VERY SHORT	
Max CD, 90 Degree Vertical	2.4	
Max CD, 80 to <90 Degree:	221.2	
	Lumens	% Lamp
Downward Street Side:	5,203.3	51.3%
Downward House Side:	4,924.7	48.5%
Downward Total:	10,128.0	99.8%
Upward Street Side:	0.0	0.0%
Upward House Side:	0.0	0.0%
Upward Total:	0.0	0.0%
<b>Total Lumens:</b>	<b>10,128.0</b>	<b>99.8%</b>

# GSSI GROUP

## LED GREENLIGHTING

Save Energy . . . Save Money . . . Save the Earth

### Model SLB-96 Street Light



Lumens Per Zone					
Zone	Lumens	% Total	Zone	Lumens	% Total
0-10	303.8	3.0%	90-100	0.0	0.0%
10-20	911.5	9.0%	100-110	0.0	0.0%
20-30	1,519.2	15.0%	110-120	0.0	0.0%
30-40	1,964.8	19.4%	120-130	0.0	0.0%
40-50	1,995.2	19.7%	130-140	0.0	0.0%
50-60	2,076.2	20.5%	140-150	0.0	0.0%
60-70	1,033.1	10.2%	150-160	0.0	0.0%
70-80	263.3	2.6%	160-170	0.0	0.0%
80-90	60.8	0.6%	170-180	0.0	0.0%

Zonal Lumen Summary			
Zone	Lumens	% Lamp	% Luminaire
0-30	2,734.6	27.0%	27.0%
0-40	4,689.3	46.3%	46.4%
0-60	8,750.6	86.4%	86.6%
60-90	1,357.2	13.4%	13.4%
0-90	10,107.7	99.8%	100.0%
90-180	0.0	0.0%	0.0%
0-180	10,107.7	99.8%	100.0%

Efficiency Total: 99.8%

Report data calculated from manufacturer's data file adjusted for 110 lm/w chipset currently utilized in lieu of tested 86 lm/w Bridgelux chipset.