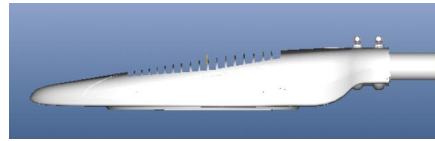
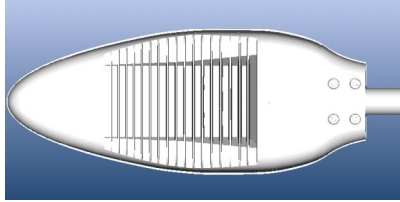


GSSI GROUP

LED GREENLIGHTING

Save Energy . . . Save Money . . . Save the Earth

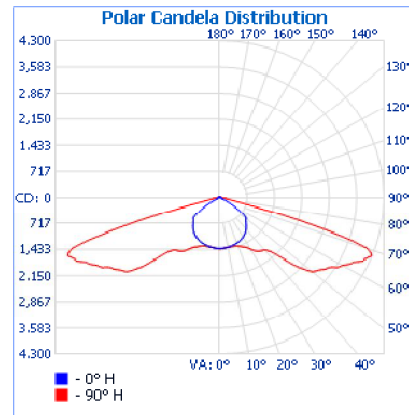
Model SLD-90 Street Light



Specifications and Characteristics

Lighting	
Luminaire:	2 HP LEDs
Rated Lumens:	6,200
Max Candela:	4290.8 at Horizontal: 90°, Vertical 68°
Correlated Color Temperature (CCT):	Pure White: 4,000 ~ 6,000 K Warm White: 3,000 ~ 4,000 K
Color Rendering Index (CRI)	Ra > 75
Photometry:	Type C
Warranty:	8 Years, 60,000 hrs.
Electrical	
LED Watts:	90W
Rated Voltage:	100 - 240V
IP Rating:	65
Certification:	UL, TUV, GS, CE, RoHS
Environmental	
Temperature Range Ambient:	-30°C ~ 50°C
Humidity Range	10% ~ 90% relative humidity
Packing Information	
Dimension:	29.7(l)x12.7(w)x5.3(h)
Net Weight:	30.9 lbs
Pieces per carton:	1

User adjustable 'wedge angle' to increase street side illumination and decrease house side illumination.
Includes an ANSI C136.10 compliant standard receptacle to accept GSSI's model PC-10C or other electronic photocontrols utilizing a 3-prong, locking plug.



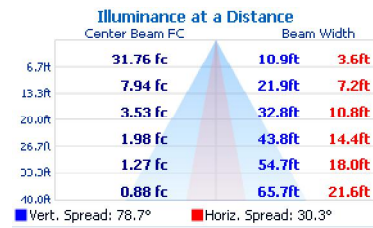
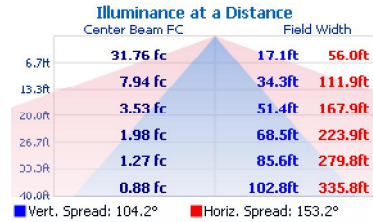
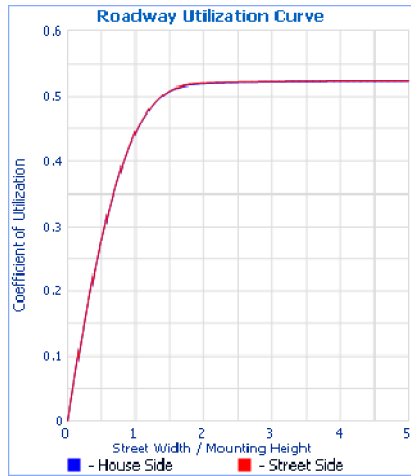
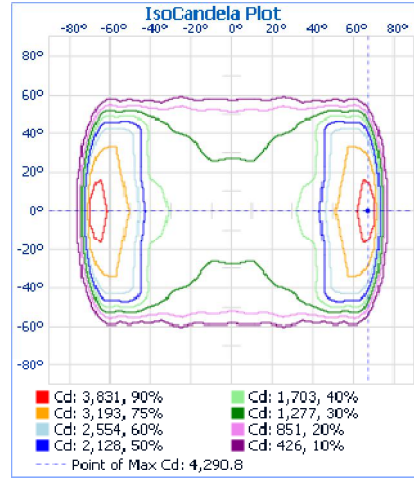
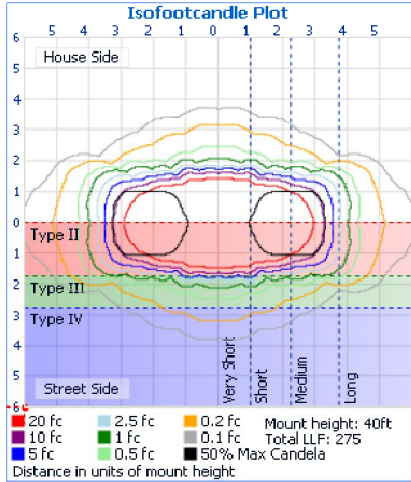
Roadway Summary		
Cutoff Classification:	CUTOFF	
Distribution:	TYPE II, MEDIUM	
Max CD, 90 Degree Vertical	9.1	
Max CD, 80 to <90 Degree:	156.2	
	Lumens	% Lamp
Downward Street Side:	3,255.2	52.5%
Downward House Side:	3,255.2	52.5%
Downward Total:	6,510.4	105.0%
Upward Street Side:	0.0	0.0%
Upward House Side:	0.0	0.0%
Upward Total:	0.0	0.0%
Total Lumens:	6,510.4	105.0%

GSSI GROUP

LED GREENLIGHTING

Save Energy . . . Save Money . . . Save the Earth

Model SLD-90 Street Light



Lumens Per Zone			Zone	Lumens	% Total
0-10	132.3	2.0%	90-100	0.0	0.0%
10-20	385.0	5.9%	100-110	0.0	0.0%
20-30	634.1	9.7%	110-120	0.0	0.0%
30-40	902.1	13.9%	120-130	0.0	0.0%
40-50	1,156.6	17.8%	130-140	0.0	0.0%
50-60	1,512.4	23.2%	140-150	0.0	0.0%
60-70	1,341.0	20.6%	150-160	0.0	0.0%
70-80	422.6	6.5%	160-170	0.0	0.0%
80-90	23.8	0.4%	170-180	0.0	0.0%

Zonal Lumen Summary			
Zone	Lumens	% Lamp	% Luminaire
0-30	1,151.5	18.6%	17.7%
0-40	2,053.6	33.1%	31.5%
0-60	4,722.6	76.2%	72.5%
60-90	1,787.3	28.8%	27.5%
0-90	6,509.9	105.0%	100.0%
90-180	0.0	0.0%	0.0%
0-180	6,509.9	105.0%	100.0%

Efficiency Total: 105.0%